

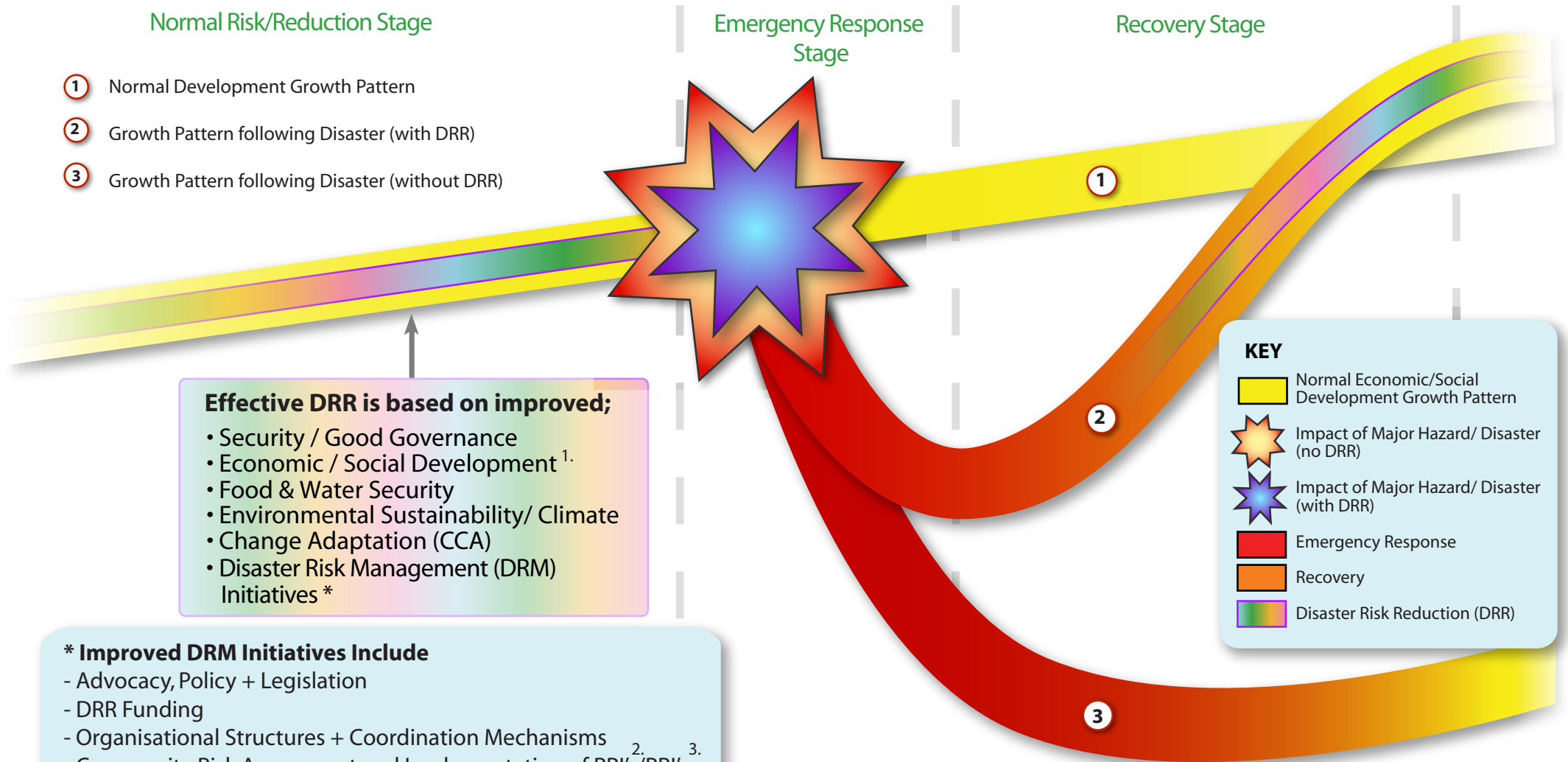
The Effective Disaster Risk Reduction (DRR) Diagram

Normal Risk/Reduction Stage

Emergency Response Stage

Recovery Stage

- ① Normal Development Growth Pattern
- ② Growth Pattern following Disaster (with DRR)
- ③ Growth Pattern following Disaster (without DRR)



Effective DRR is based on improved;

- Security / Good Governance
- Economic / Social Development ^{1.}
- Food & Water Security
- Environmental Sustainability/ Climate
- Change Adaptation (CCA)
- Disaster Risk Management (DRM) Initiatives *

- * Improved DRM Initiatives Include**
- Advocacy, Policy + Legislation
 - DRR Funding
 - Organisational Structures + Coordination Mechanisms
 - Community Risk Assessment and Implementation of RRI's/PRI's ^{2.} ^{3.}
 - DRM Planning at all levels
 - Capacity Building/Training (inc. standards + codes of conduct)
 - Research/ Information Management
 - Early Warning System + Possible Evacuation
 - Public Awareness + Education
 - DRM/DRR Monitoring + Evaluation (M+E)

KEY

- Normal Economic/Social Development Growth Pattern
- Impact of Major Hazard/ Disaster (no DRR)
- Impact of Major Hazard/ Disaster (with DRR)
- Emergency Response
- Recovery
- Disaster Risk Reduction (DRR)

Effective DRR Initiatives will lead to a reduction in the likelihood and impact of a disaster happening; and a post-disaster recovery process with a greater possibility of 'building back better'. Effective DRR includes an 'All Hazard Approach', with key roles being played both by the government at all levels, and by the 'communities at risk'.

Note

1. With Particular Emphasis on Poverty Reduction 2. Risk Reduction Initiatives (RRI's) 3. Poverty Reduction Initiatives (PRI's)
 4. An 'All Hazards Approach' includes assessing all possible hazards/threats; covering all geographical areas; involving all levels of government; and including all potential stakeholders.