

RECOVERY PLANNING WHEELS WITHIN WHEELS

LeGRAND L. MALANY

SHELTER AND SETTLEMENTS ADVISOR
OFFICE OF U.S. FOREIGN DISASTER
ASSISTANCE



**THE CITY IS GONE
YOU ARE IN CHARGE OF
REBUILDING**

WHAT DO YOU DO?



FIRST: DO SOMETHING

EVEN IF IT MAY NOT BE RIGHT
**because doing nothing will create more
problems**



GET ORGANIZED

- **ESTABLISH YOUR PROGRAM PLANNING AND MANAGEMENT CAPACITY.**
- **ESTABLISH YOUR INFORMATION MANAGEMENT AND TECHNOLOGY CAPACITY**
- **ESTABLISH YOUR PUBLIC INFORMATION AND PUBLIC SUPPORT PROGRAM**



MOVE QUICKLY

**YOUNG CONDITIONS
ARE EASIER TO
CONTROL THAN OLD
ONES**



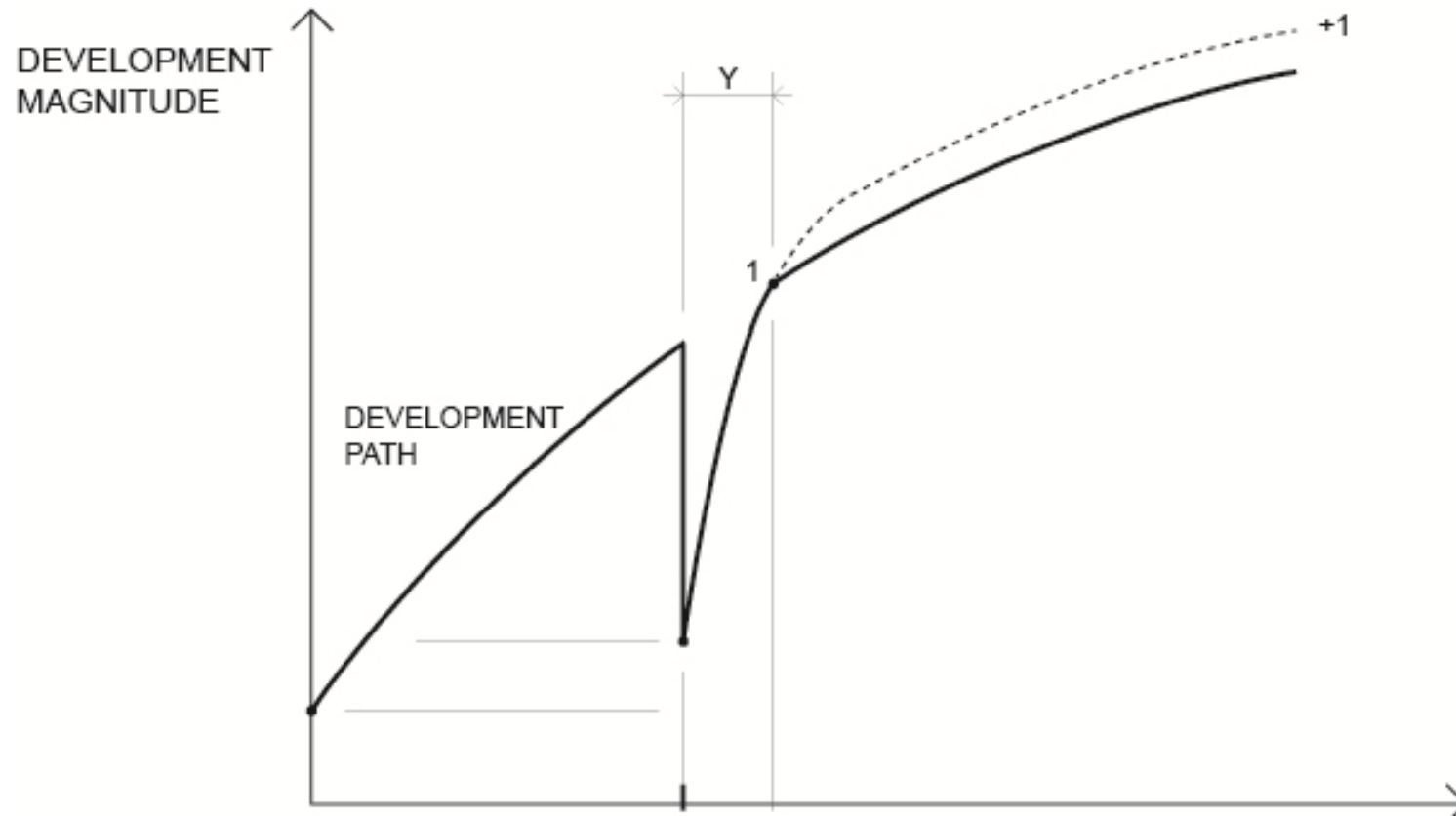
**YOU CAN'T MAKE A PLAN IF YOU DON'T
KNOW WHERE YOU ARE GOING**

**SO WHERE IS YOUR END
POINT?**

**IF YOU DON'T KNOW WHERE YOU ARE
GOING YOU WILL END UP SOMEWHERE
ELSE**



THE DISASTER RECOVERY INDEX





YOU ARE NOW IN THE POSITION TO:

**DEVELOP THE CITY'S DAMAGE
SPECIFICATION.**

**WORK ON THE CITY'S SHARED
VISION (YOU KNOW WHERE YOU
NEED TO END UP).**

**MOST OF THE TIME, THE FIRST WEEK IS WORTH
THE NEXT SIX MONTHS**

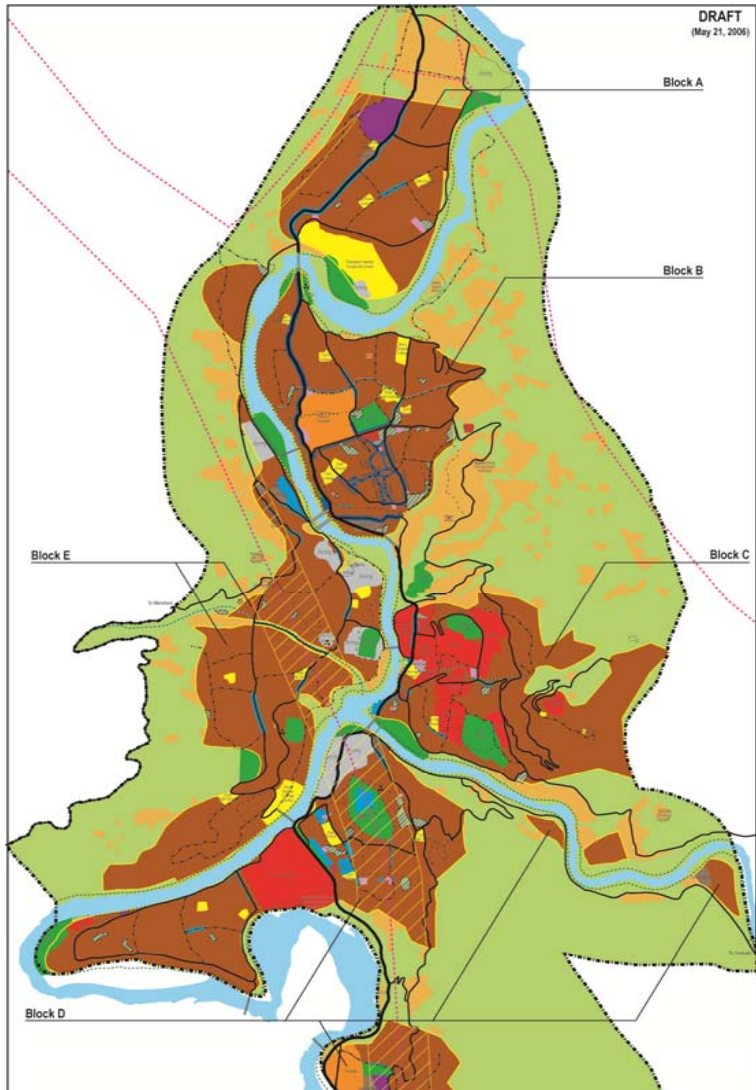
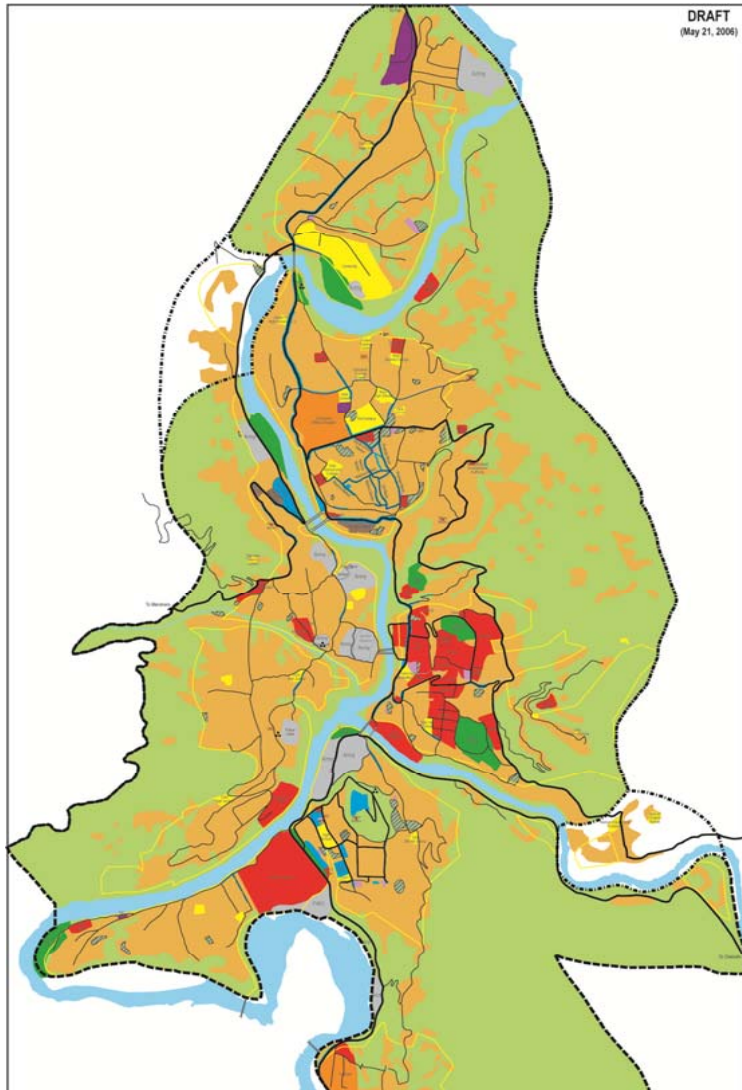


DAMAGE SPECIFICATION:

**INFRASTRUCTURE DAMAGE
SURVEYS (BUILDINGS, ROADS,
UTILITIES . . .**

HAZARD MAP

SOFT GOODS DAMAGE





THE SHARED VISION

- **SETS YOUR RECOVERY PLAN FRAMEWORK**
- **IDENTIFIES YOUR KEY FUNCTIONAL AREAS**
- **SETS YOUR MAJOR/PRIMARY GOALS**
- **SETS YOU FIRST BUDGET APPROXIMATION**

**A LITTLE EFFORT IN THE BEGINNING
CAN ELIMINATE THE NEED FOR LOTS OF
EFFORT AT THE END**



PLATEAU 1

**YOU KNOW WHERE YOU ARE AND
WHERE YOU ARE GOING**

**YOU CAN NOW TALK ABOUT BUILDING A
PLAN TO GET THERE**

**IF YOU THINK THE COST OF PLANNING IS
EXPENSIVE CHECK THE COST OF NOT**



THE FUNCTIONAL AREAS

- **THE ORGANIZATION OF THE FUNCTIONAL AREAS INTO A COHESIVE SCHEME IS THE FRAME WORK FOR THE RECOVERY PLAN.**
- **THE HIGH LEVEL OBJECTIVES/CRITERIA FOR EACH FUNCTIONAL AREA COMES FROM THE SHARED VISION.**



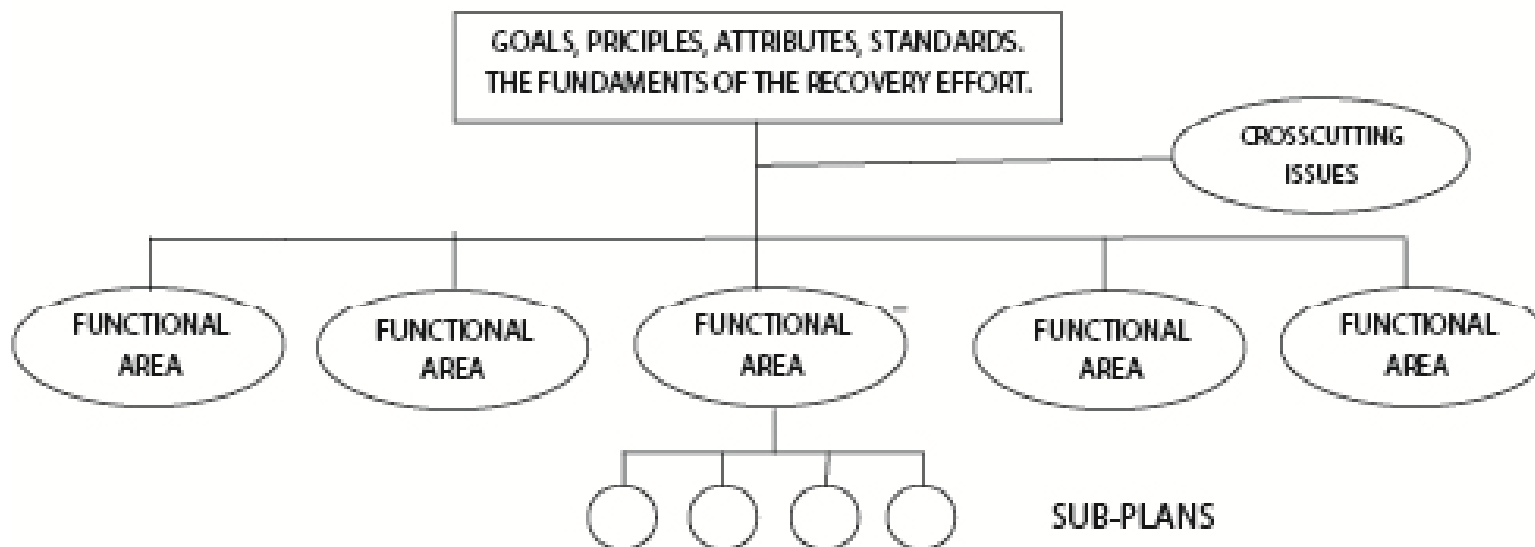
FUNCTIONAL AREA PLANS

(FIRST LEVEL SUBPLANS)

- **HOUSING RECOVERY AND REBUILDING PLAN**
- **RUBBLE AND CLEAN-UP PLAN**
- **CITIZEN SERVICES INFRASTRUCTURE PLAN**
- **CIVIC INSTITUTIONS PLAN**
- **ECONOMIC AND LIVELIHOODS PLAN**



THE RECOVERY PLAN (PHYSICAL)





- **THE RECOVERY PLAN IS REALLY AN ARRAY OF INTERRELATED PLANS THAT ROLL UP INTO THE RECOVERY FRAMEWORK AND COLLECTIVELY DEFINE THE “RECOVERY PLAN.”**
- **EACH SUBPLAN COVERS IT’S**



PLAN DRIVER

**IN THE FIRST INSTANT, RECOVERY
PLANNING IS DRIVEN BY THE
SETTLEMENT PROCESS**

**SETTLEMENTS ARE THE INTEGRATED
PRODUCT OF INFRASTRUCTURES**



WHAT TO DO SECOND

- **GET RUBBLE REMOVAL GOING**
- **GET YOUR HAZARD MAP DRAWN**
- **GET ZONING AND BUILDING CODE ISSUES DETERMINED**
- **GET YOUR ASSESSMENTS STARTED**



IMPLEMENTATION / OPERATIONS

ALTHOUGH THIS PRESENTATION IS ABOUT PLANNING, A NOTE ON IMPLEMENTATION AND OPERATIONS IS APPROPRIATE, IN OUR CONTEXT, BECAUSE TIME IS A BIG PROBLEM.



- **OURS IS DYNAMIC PLANNING, WE HAVE TO DESIGN AND BUILD THE HIGHWAY AS WE USE IT.**
- **IMPLEMENTATION/OPERATIONS MUST FEED BACK INTO PLANNING PROCESS TO DRIVE RE-PLANNING FUNCTION.**
- **SOME IMPLEMENTATION/OPERATIONS MUST START CONCURRENT WITH THE PLANNING FUNCTION (i.e., rubble**



Icons + text



Thank you for your time.

**Do you have any questions or
comments?**

For more information, questions and comments, contact
Imalany@ofda.gov