



# **Benchmarks and Accountability in MSF Holland**

Brussels

9 December 2005

# MSF's Purpose

MSF Charter:

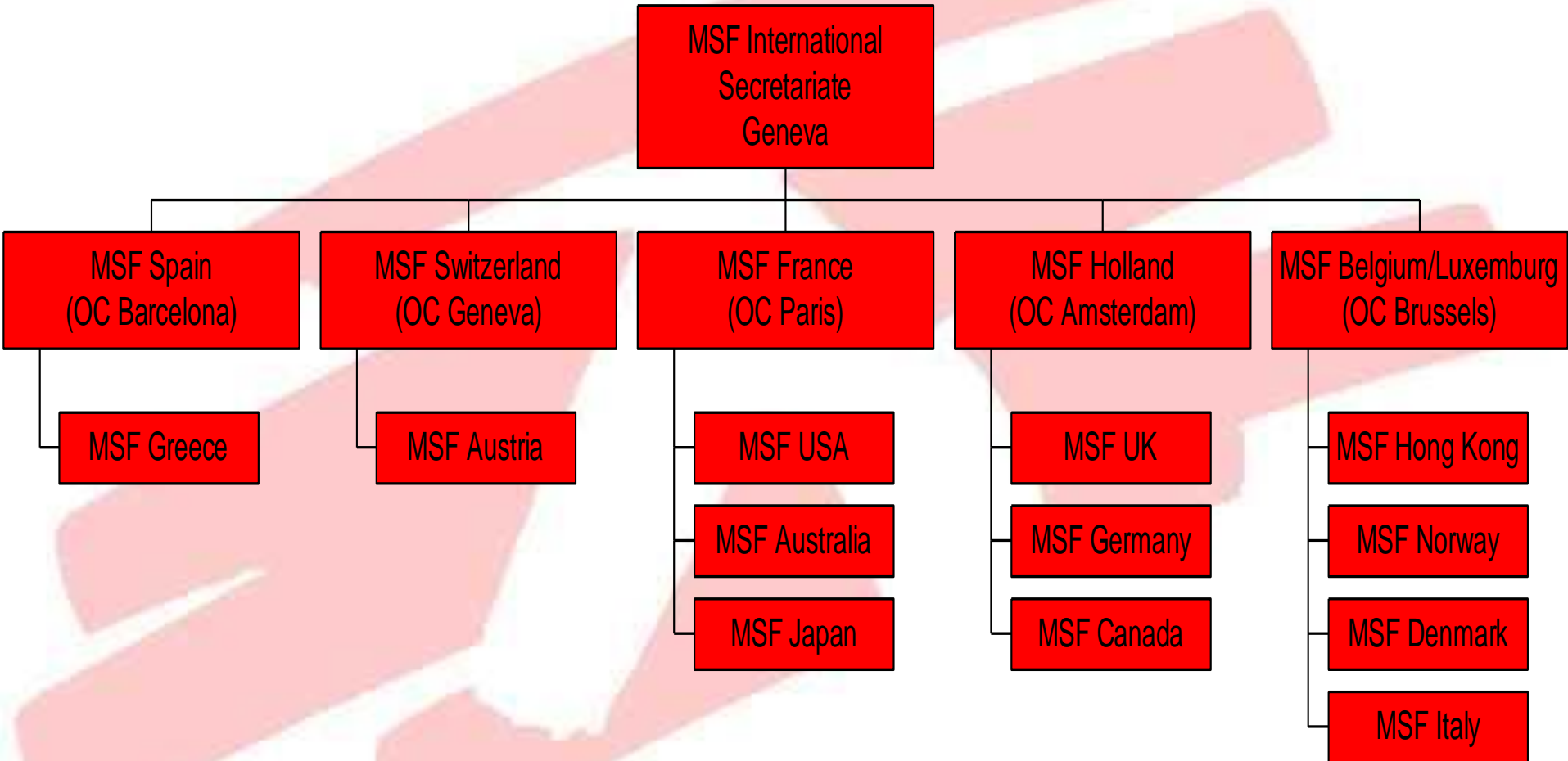
The overall purpose of MSF is to preserve life and alleviate suffering while protecting human dignity and seeking to restore the ability of people to make their own decisions.

This purpose is to be accomplished through the provision of medical aid and a personal commitment to act as a witness to events surrounding populations in danger.

# MSF

- 1971: ICRC doctors no access to population in Biafra
- Humanitarian values above political sovereignty

# MSF Sections



# MSF - Holland

- Founded in 1984
- Work in 30 countries (77)
- Budget € 120 miljoen (460 million)
- 6500 national staff
- 580 expats (50% of medical)
- 170 positions in Amsterdam

# Accountability:

the price for power and resources

## External:

- To our donors (private and institutional)
- To our beneficiaries

## Internal:

- Executive is accountable to the Association represented by the Board.
- Operations, departments and units report on a four monthly basis on progress against their annual plan.

# Accountability frameworks in MSF:

- Humanitarian principles of Proximity (Access), Impartiality, Independence, Neutrality
- Standards (clinical and nutritional guidelines)
- Medical ethics (quality of care)
- OECD/DAC criteria

# Standards

Standards (MSF clinical guidelines, Sphere minimal standards, WHO benchmarks) are indicators and as such measure the combined effects of the entire humanitarian spectrum.



<b>Objectives</b>	<b>Standards</b>	<b>Sources of Verification</b>	<b>Advocacy (responsibilities of others)</b>
<p><b>Overall</b></p> <p>← <b>Reduce suffering and restore dignity</b></p>		<p><b>Witness accounts</b></p>	<p><b>Refugee Law Geneva Convention</b></p>
<p>Project purpose ←</p> <p><b>Reduced morbidity and mortality</b></p>	<p>(Sphere,WHO benchmark)</p> <p><b>&gt; 2/10,000 deaths/day</b></p>	<p>(MSF) registers</p>	<p>e.g. MoH has public health under control</p>
<p>Specific objectives ←</p> <p>e.g. <b>Reduced malnutrition</b></p>	<p>(Sphere, MSF clinical guidelines)</p> <p><b>% of &lt; 5 y.o. children at wt/ht of 80% of the median of the reference population</b></p>	<p><b>MSF registers</b></p>	<p>e.g. WFP General Food distribution</p>
<p>Activities ←</p> <p>e.g. <b>MSF therapeutic feeding centre gives 2100 kcals per person per day</b></p>	<p><b>Resources</b></p> <p><b>Building materials</b></p>	<p><b>Costs</b></p> <p><b>€€€</b></p>	<p>• <b>Access</b></p> <p>• <b>Resources</b></p>

# Dual Accountability

- Private Institutions (normative approaches)  
standards, benchmarks
- Social Mandate (qualitative approaches)  
public debate