



INCIDENT MANAGEMENT SYSTEMS

**ALNAP Webinar
November 10, 2014**

Chief Joseph Pfeifer, MA, MPA, Fire Department of New York
Arnold M. Howitt, Ph.D., Harvard Kennedy School

Global Challenges



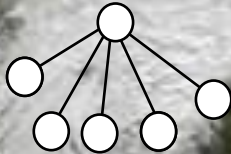
Coordinating Large Scale Disasters

- During crises, emergency responders must often work closely with other organizations and people with whom they've never before collaborated.
- ***Under such conditions, how can they operate effectively – saving lives and property – without endangering themselves, their colleagues, and the public?***

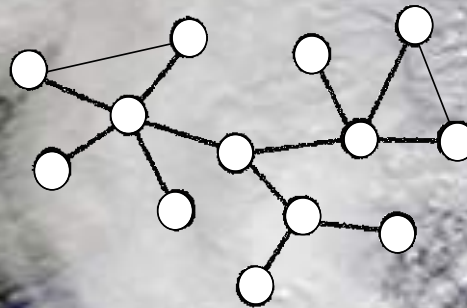


Emergent Response

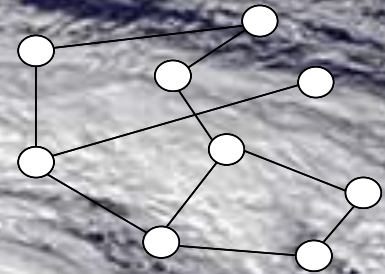
Centralized Network



Cluster Network



Random Network



What is ICS/IMS?

- A standardized, on-scene, all-hazards incident management concept.
- Enables a coordinated response among various jurisdictions, agencies, and supporting organizations.
- Establishes common processes for planning and management of resources.
- Allows for integration within a common organizational structure.

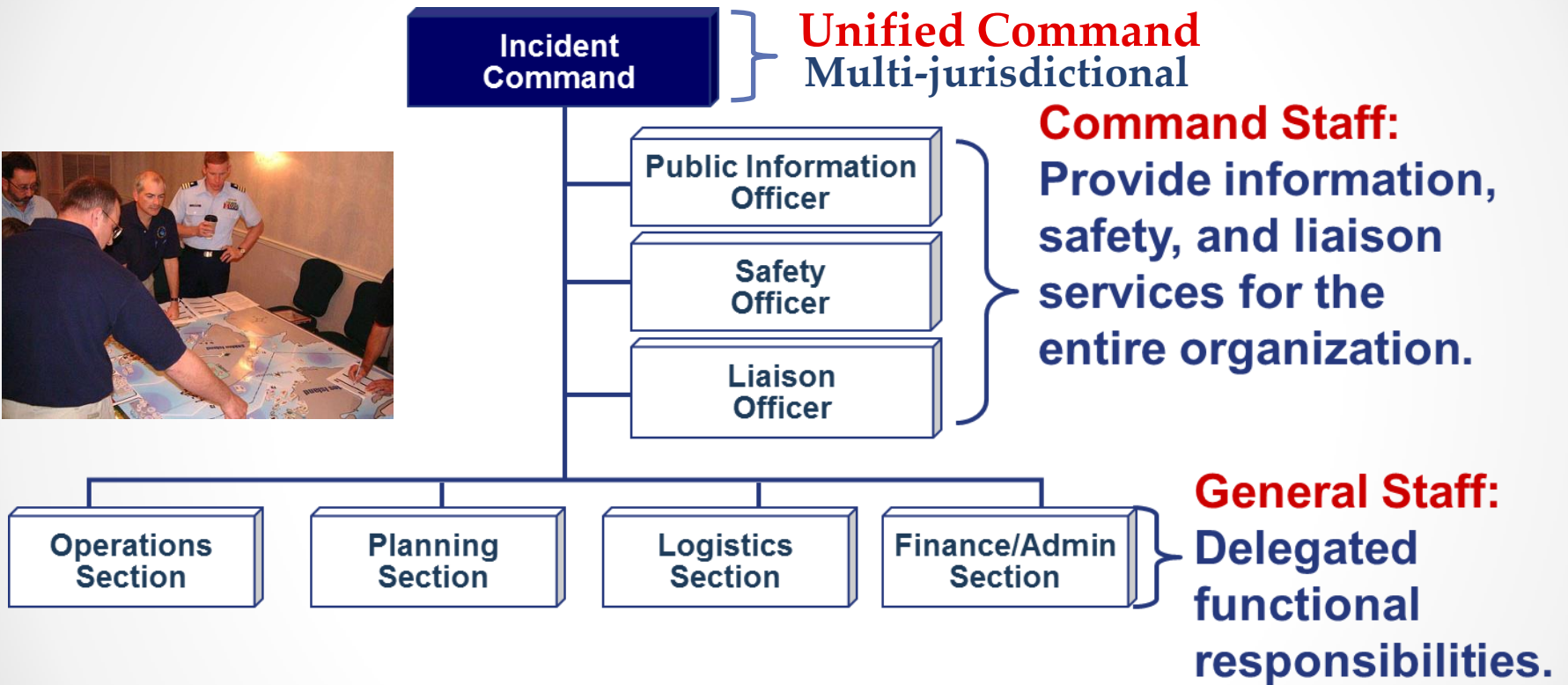


• **ROUTINE**

CRISIS

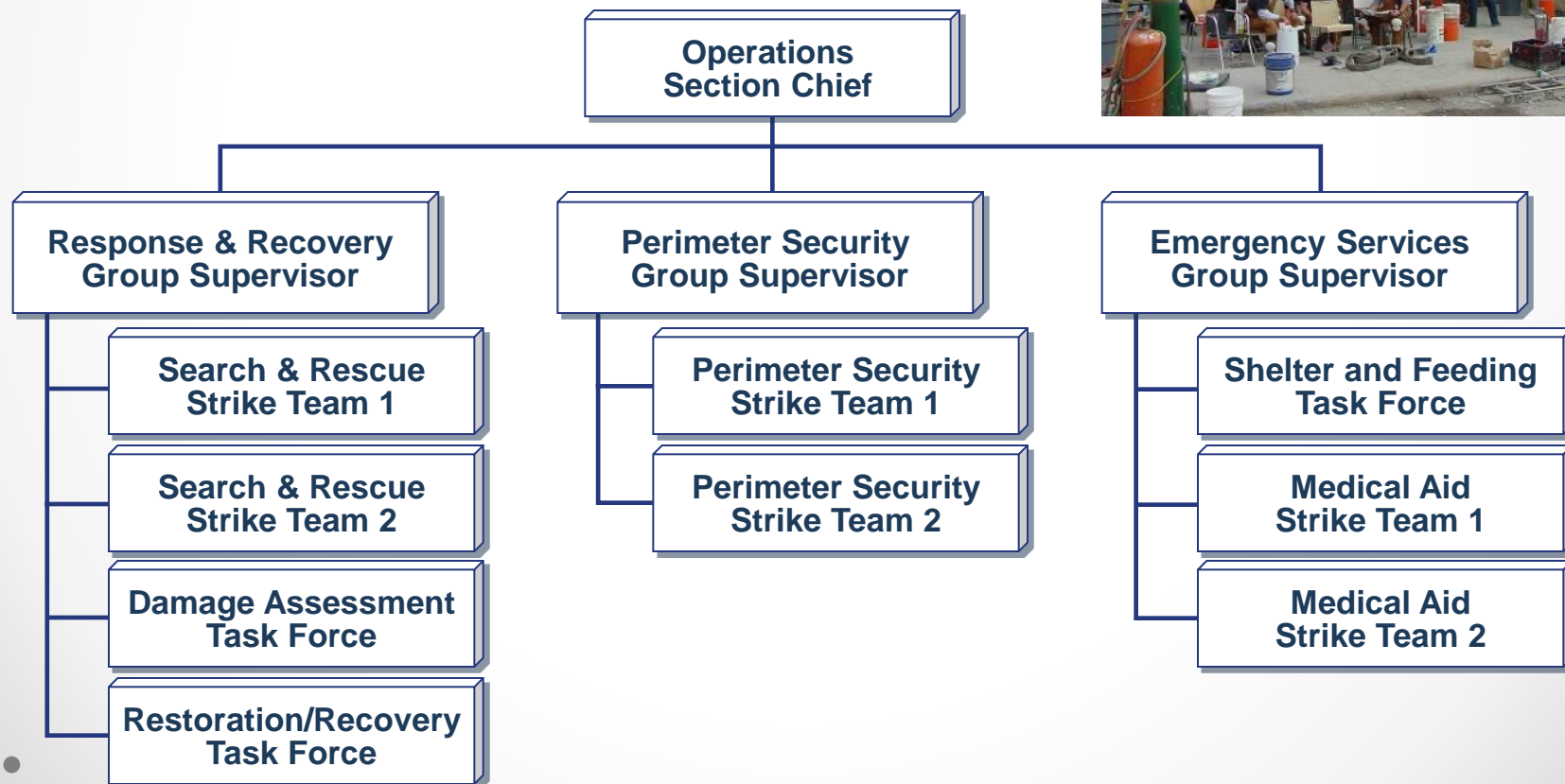
CATASTROPHE •

Basic ICS Structure

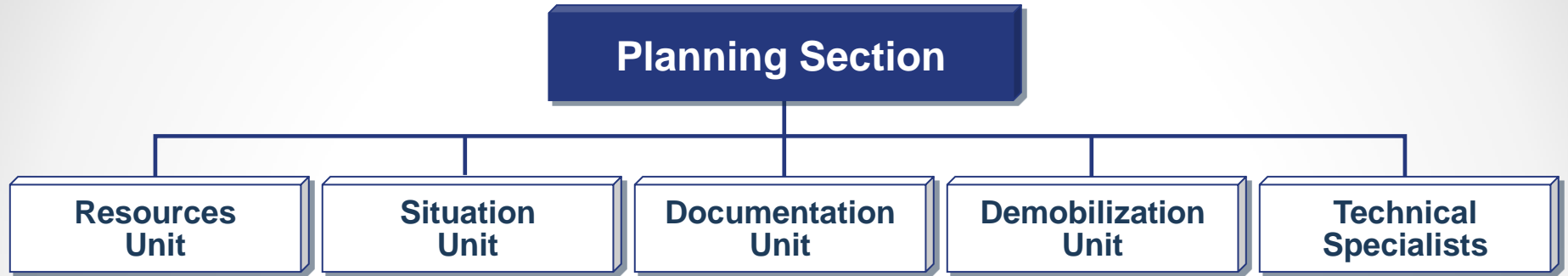


Operations

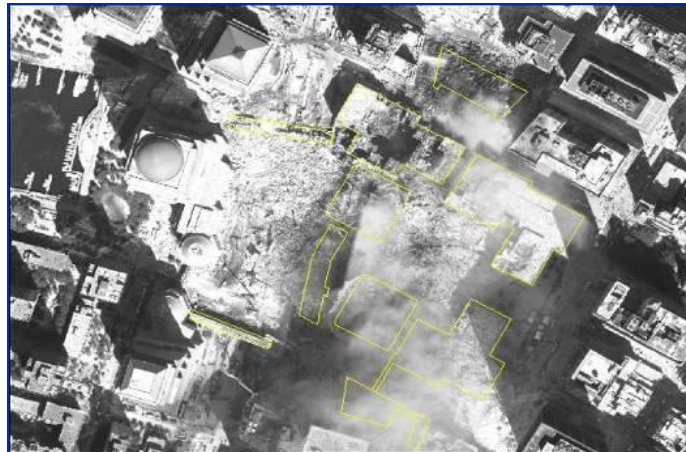
- Ops Section
 - The work is divided into functional or geographical areas
 - Span of control



Planning

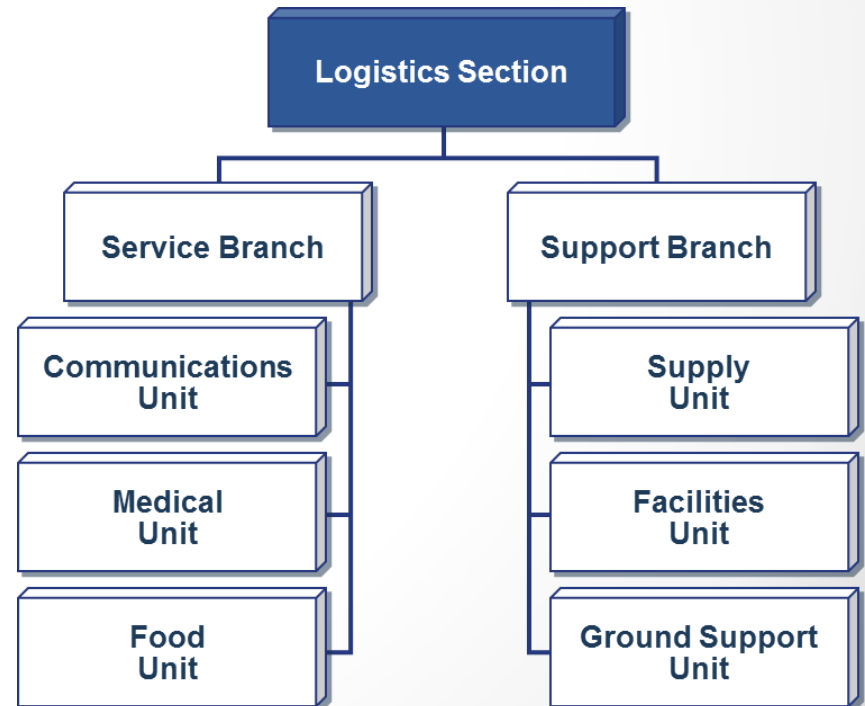


- **Planning Meetings** to develop a daily operationally-oriented **incident action plan** is crucial to the effectiveness of IMS.



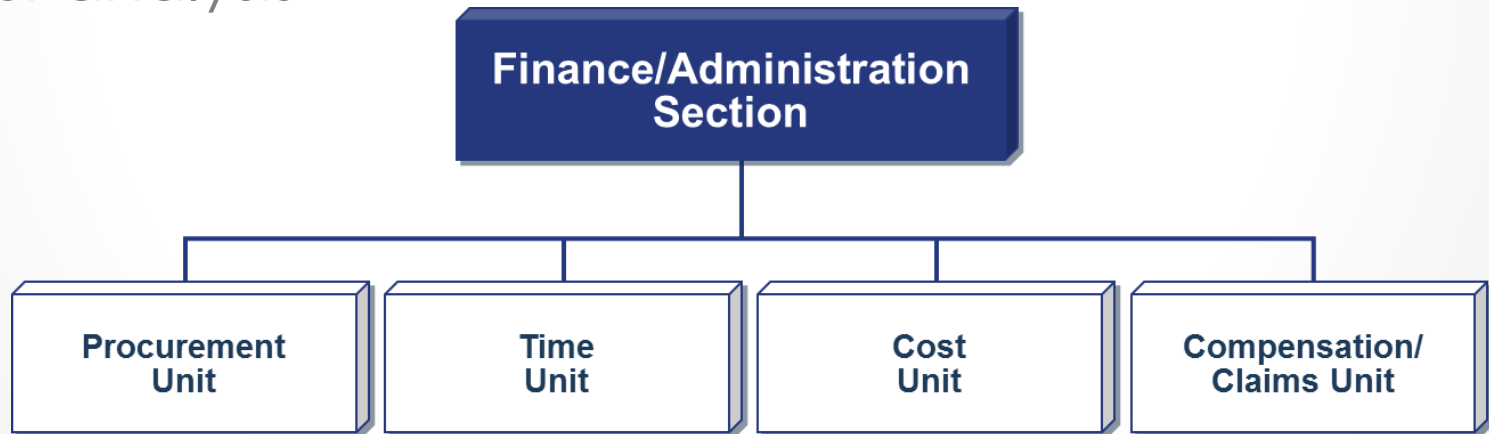
Logistics

- Ordering, obtaining, maintaining, and accounting for essential personnel, equipment, and supplies.
- Providing communication planning and resources.
- Setting up food services for responders.
- Setting up and maintaining incident facilities.
- Providing support transportation.
- Providing medical services for injured personnel



Finance/Administration

- Contracts
- Reimbursement
- Time Keeping
- MOU
- Cost analysis

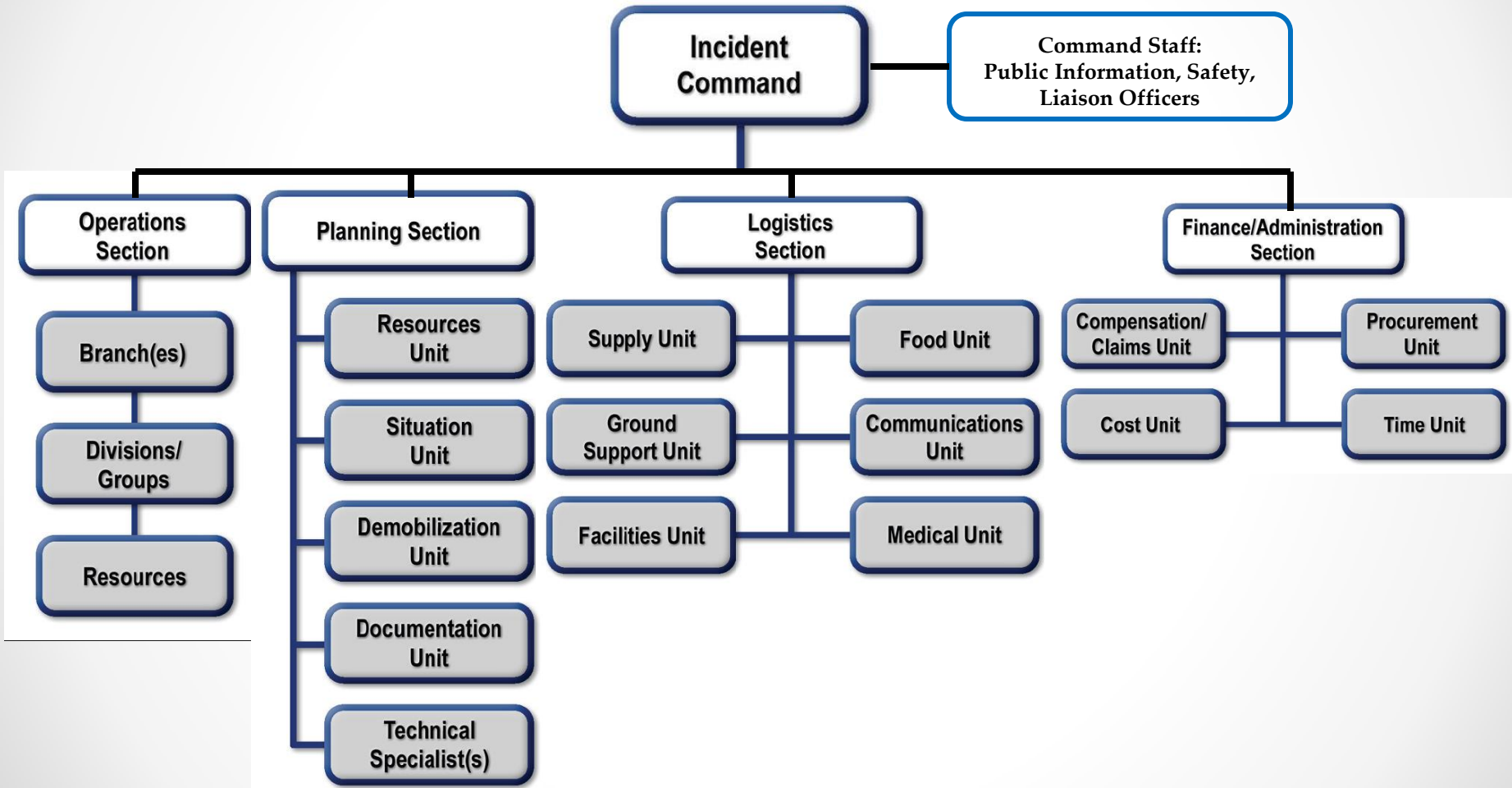


Incident Management Team

- Specially trained and experienced team that manages major incidents.
 - E.g.. wildfires, World Trade Center, Hurricane Sandy



ICS Functional Structure



Advantages of IMS

- **Flexibility:**
 - Cause of incident
 - Size: modular and scalable
 - Manageable span of control
 - Location: single or multiple sites
 - Complexity: rich in functionality
- **Standardization:**
 - Chain of command
 - Span of control
 - Terminology
 - Process
- **Boundary spanning:**
 - Multi-professional or specialty
 - Multi-organizational
 - Multi-jurisdictional
- **Promotes information sharing**
- **Division of labor and resources**
- **Permits replacements**
 - Relief in 24/7 operations

Myths & Misconceptions

- IMS works only with hierarchical, military-style organizations
- IMS requires participants to completely surrender their autonomy
- IMS is inflexible, must only be done “by the book”
- IMS is useful only for “big” events



Potential for a Humanitarian Assistance Incident Management System?

