



Using CERF and CHF in support of Rapid Response Mechanism

Presentation to ALNAP
AGM – 4 March 2015

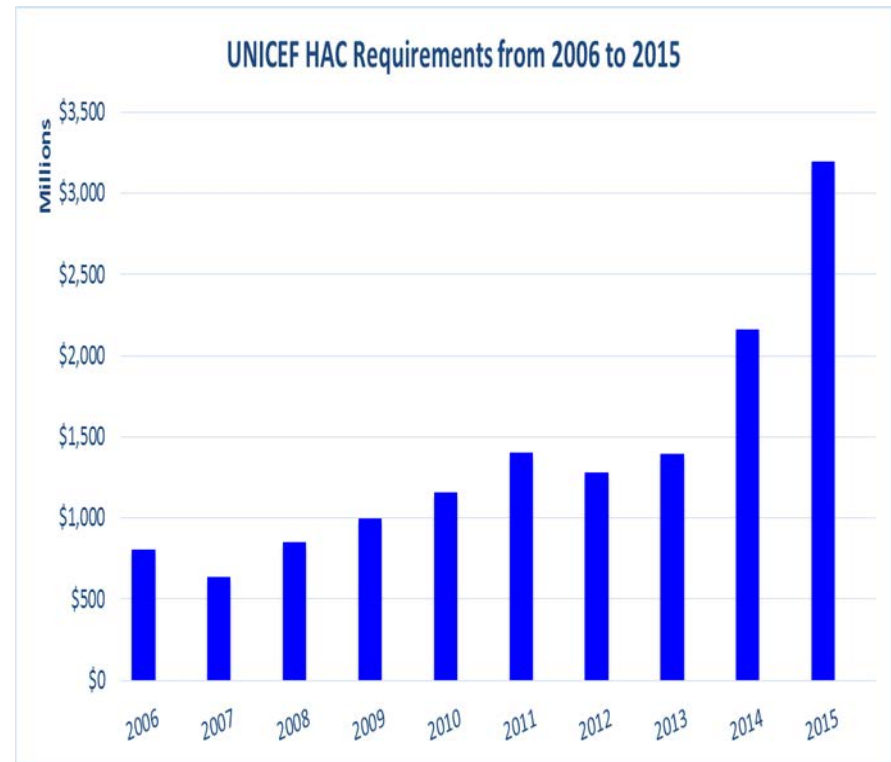
EO- UNICEF HQ
Koorosh Raffii

unite for
children

unicef 

Trends in UNICEF's Humanitarian funding

- Unprecedented humanitarian caseload and **increased funding needs**
- **Continued generous funding** from donors, but...
- Funding has **not kept pace with needs**
- Funding has **become more targeted** crisis-specific



In 2015, UNICEF is requesting
\$3.1 billion

UNICEF's CERF funding

CERF Grants by agency (globally, 2013 and 2014)

	In US Dollars	2013		2014	
	Total CERF	\$482,003,806		\$460,799,180	
1	WFP	\$142,999,168	29.67 %	\$137,313,500	29.80 %
2	UNICEF	\$116,033,950	24.07 %	\$115,789,621	25.13 %
3	UNHCR	\$69,936,146	14.51 %	\$52,388,329	11.37 %

Data from <http://www.unocha.org/cerf/partner-resources/research-and-analysis>, accessed 2nd March 2015

Rapid Response Mechanism

Rapid Response Mechanism -- Examples

- Democratic Republic of Congo
 - Central African Republic
 - South Sudan
 - Iraq
-
- RRM utilized in humanitarian situations
 - Provides immediate non-food, WASH and Shelter support

Rapid Response Mechanism -- CAR

In 2015 RRM in CAR has a budget of \$12.2 million (ca. 50% funded) by

- CERF
- CHF
- ECHO
- SDC
- UNICEF general funds

Rapid Response Mechanism - CAR

Objective #1:

Undertake rapid multi-sector assessments in areas affected by a shock with humanitarian consequences and ensure rapid dissemination to clusters and the humanitarian community.

Rapid Response Mechanism - CAR

Objective #2:

In the absence of other humanitarian response capacity, meet the immediate survival needs of targeted households with emergency NFI and WASH assistance.

Rapid Response Mechanism - CAR

Objective #3:

Validate the efficacy and timeliness of response and results for assisted populations.

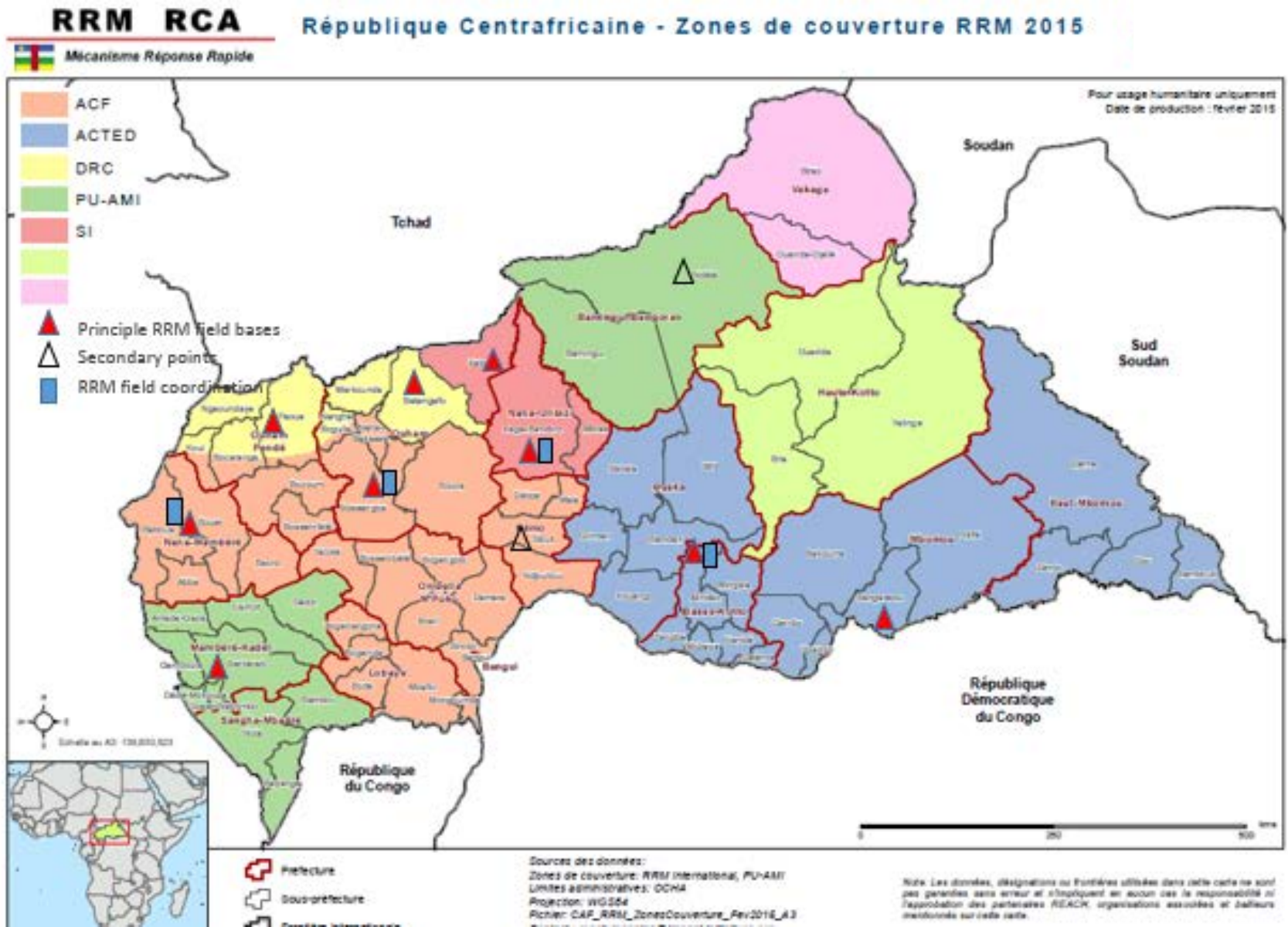
Rapid Response Mechanism - CAR

Current Coverage First Half of 2015

NGO	# <u>Benef</u> NFI	# <u>Benef</u> WASH	# Bases	# Teams
ACF	30,000	30,000	4	2
ACTED	30,000	18,100	4	2
SI	20,000	18,750	3	2
PU-AMI	13,500	8,000	3	1
DRC	20,000	30,000	8	2
TOTAL¹	113,500	104,850	22	9

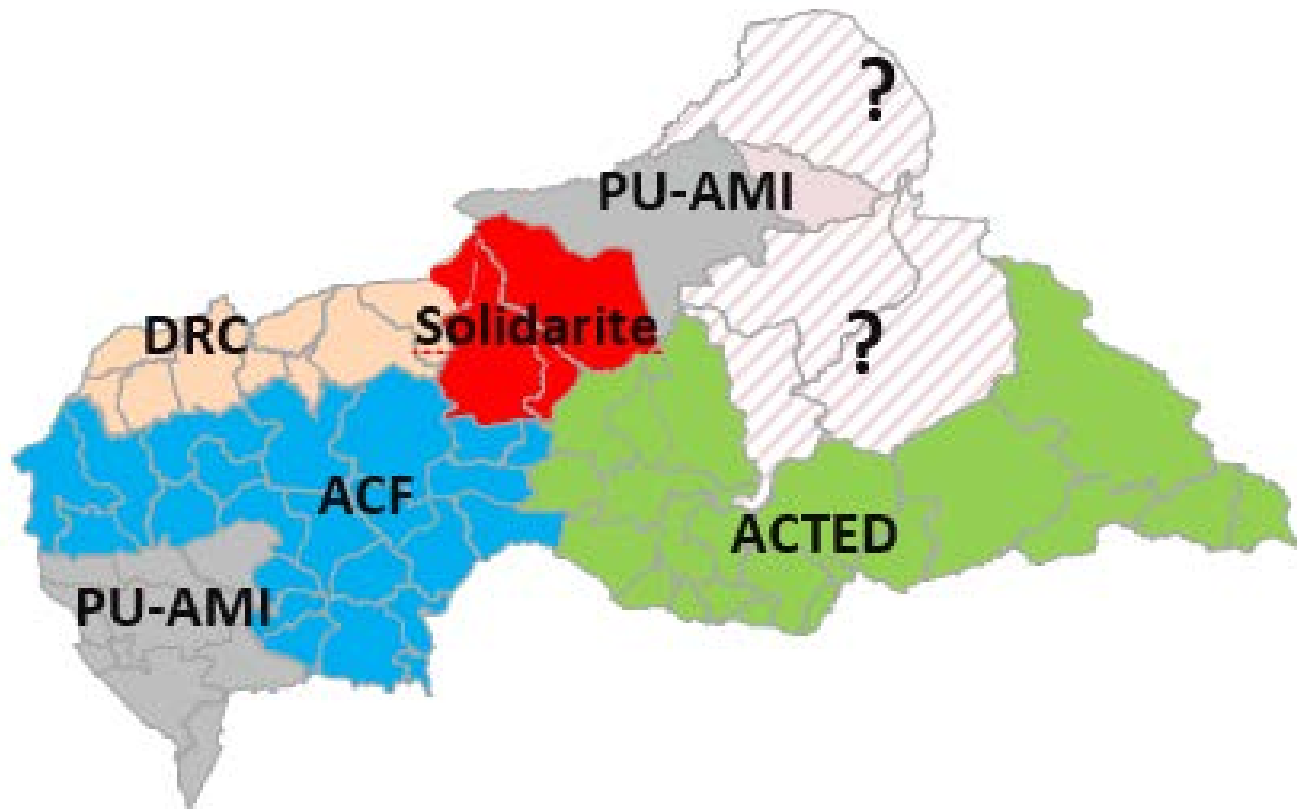
All implementing partners assessed as 'low risk'
by UN HACT (Harmonized Approach to Cash Transfers).

Rapid Response Mechanism - CAR

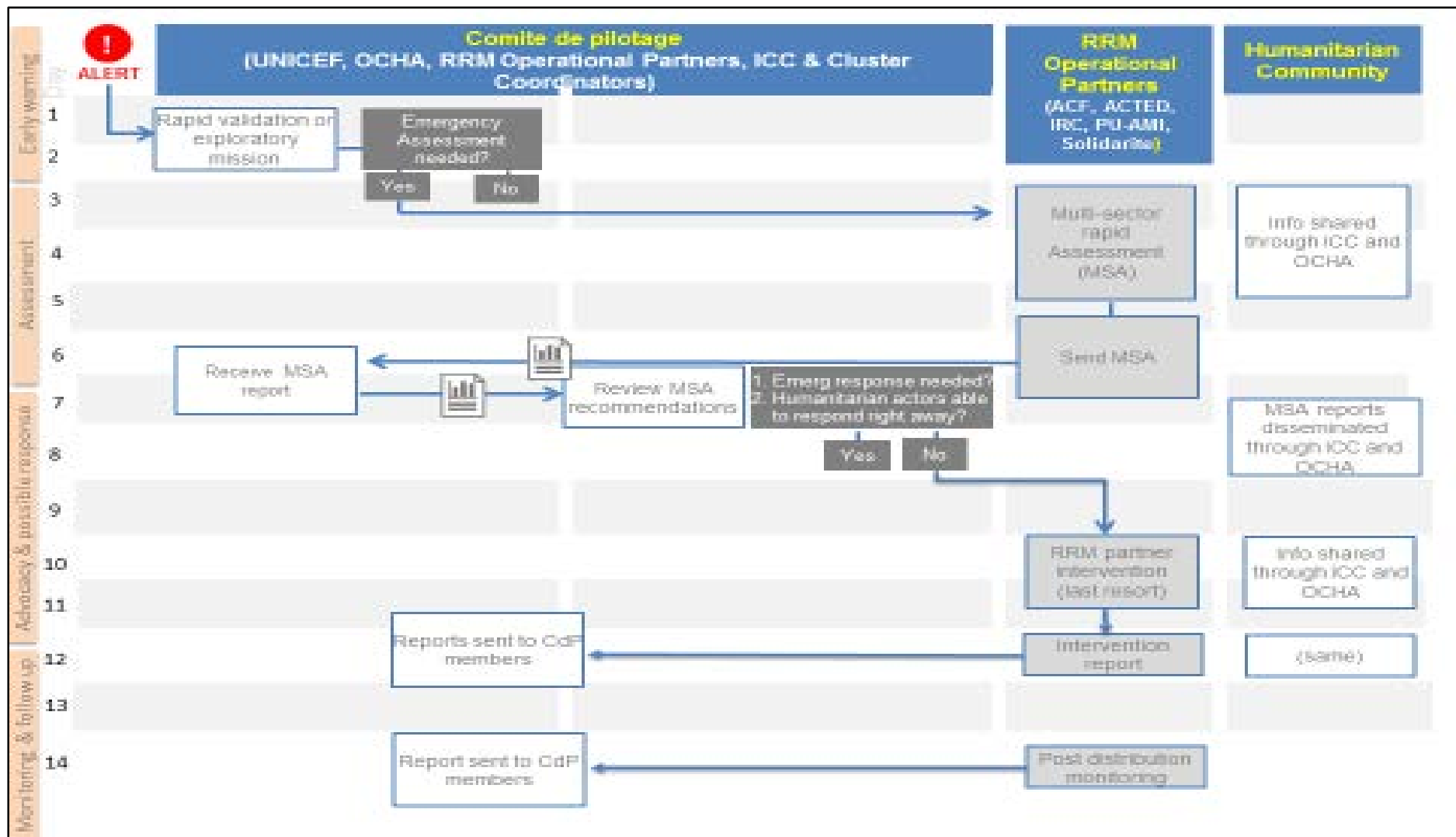


Rapid Response Mechanism - CAR

Current Coverage First Half of 2015



RRM – Decision Tree



**THANK YOU FOR YOUR TIME
AND ATTENTION**